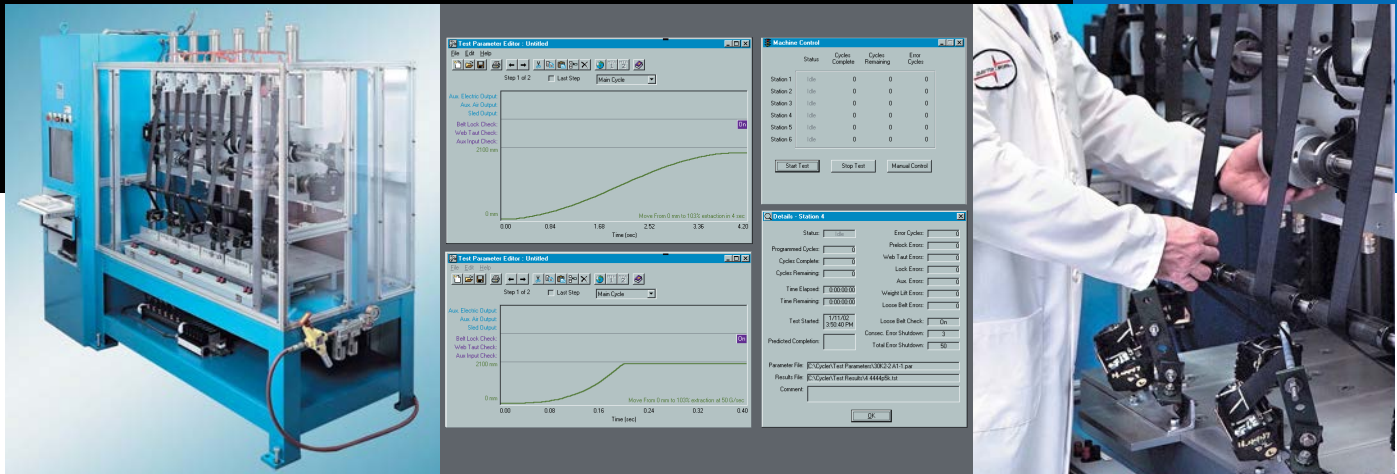


# SAFETY RESTRAINT TESTING FACILITY

Dayton T. Brown, Inc. continues to expand our facility capabilities to better serve our customers ...

... Our PC based Automotive Seatbelt Retractor Durability Cycler provides independent, continuous testing

**Innovation.  
Integrity.  
Dependability.**



## System Capabilities

- 6 stations - 2 independent closed-loop servo motors control 3 stations each
- Each station may be automatically declutched to allow other stations to continue testing if one part fails
- Impact simulation - Pneumatic controlled sleds are used to simulate vehicle impact. Each motor may be programmed to simulate webbing acceleration
- PC based software system easily programmable to perform FMVSS 209 conformance tests as well as customize OEM requirements

**[www.dtb.com](http://www.dtb.com)**



Product Life Cycle Support Services  
Serving Military and Commercial Markets  
Since 1950



\* Accredited Test Lab  
767.01, 767.02, 767.03

ISO 9001:2008 and AS9100C  
Registered



\* NVLAP LAB CODE  
200422-0

1195 Church Street, Bohemia, NY 11716-5014 USA  
Please direct all inquiries to: 1-800-232-6300 • email [test@dtb.com](mailto:test@dtb.com)  
Visit our web site at: [www.dtb.com](http://www.dtb.com)

\* Please visit [www.dtb.com](http://www.dtb.com) for testing covered under our scopes of accreditation.

## Test Equipment for FMVSS 209, Seat Belt Assemblies

FMVSS 209 Para.	Test Performed	Test Equipment
S4.2(a)	Webbing Width	Calibrated Steel Scale
S4.2(b)	Webbing Strength	Instron Tensile Tester
S4.2(c)	Webbing Elongation	Instron Extensiometer
S4.2(d)	Webbing Abrasion	DTB Abrasion Tester
S4.2(e)	Resistance To Light	Atlas Weatherometer
S4.3(a)	Corrosion Resistance	DTB & Industrial Filter & Pump Mfg
S4.3(b)	Temperature Resistance	Various Temperature Chambers
S4.3(c)	Attachment Hardware Strength	Instron Tensile Tester
S4.3(d)	Buckle Release	Instron Tensile Tester and Chatillon Push Scale
S4.3(e)	Adjustment Force	Instron Tensile Tester & DTB Tilt Lock Tester
S4.3(f)	Tilt Lock Adjustment	Instron Tensile Tester & DTB Tilt Lock Tester
S4.3(g)	Buckle Latch	DTB Buckle Latch Fixture
S4.3(h), (I), (j)	Retractor Performance	Chatillon Pull Scale & DTB Acceleration Sled
S4.3(k)	Retractor Performance	Four-Nine Station Retractor Cycling Machines
S4.3(k)	Retractor Performance	One-Three Station Retractor Lock Up Cycling Machine
S4.3(k)	Retractor Performance	One-Six Station VSR Technologies Retractor Cyler
S4.4(a) & (b)	Assembly Performance	Instron Tensile Tester



*A World of Engineering and Testing Under One Roof™*

DAYTON T. BROWN, INC.  
ENGINEERING & TEST DIVISION



[www.dtb.com](http://www.dtb.com)

PHONE: (631) 589-6300  
FAX: (631) 589-3648